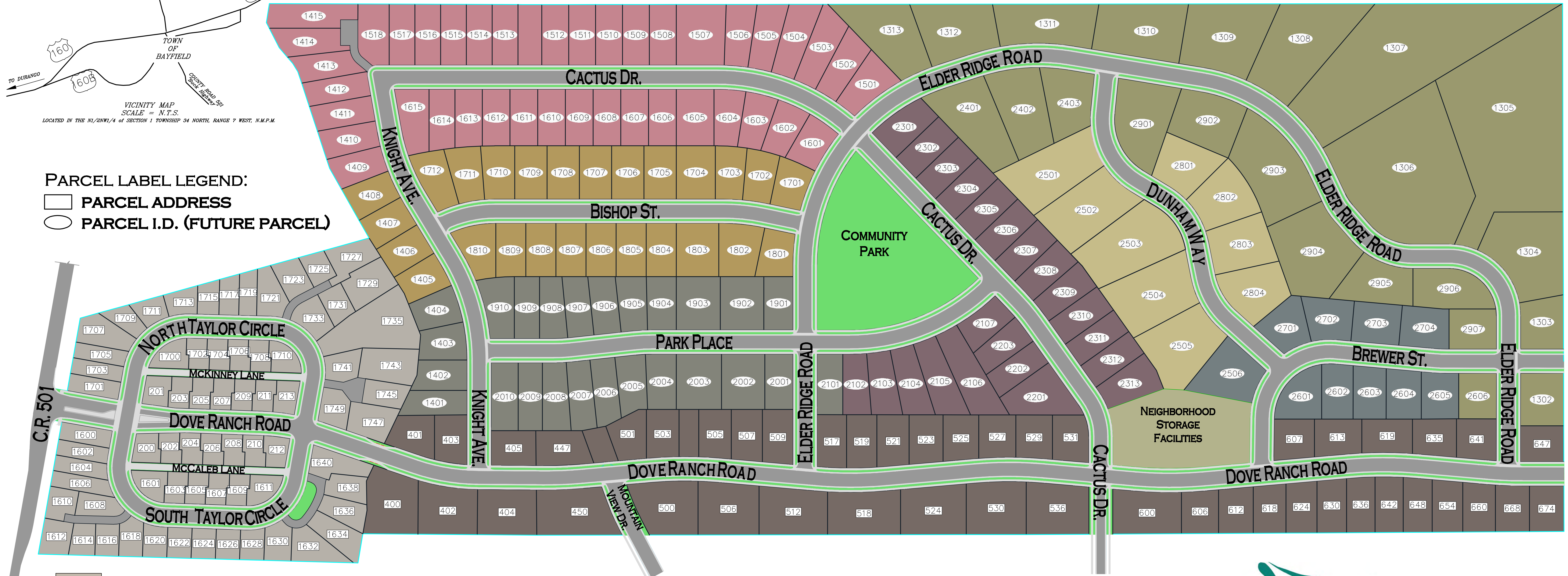


**PARCEL LABEL LEGEND:**

- PARCEL ADDRESS
- PARCEL I.D. (FUTURE PARCEL)



- THE GLEN - SINGLE FAMILY LIVING FOR THE ACTIVE LIFESTYLE - LOW MAINTENANCE!!!
- DOVE RANCH ROAD - SINGLE FAMILY HOMES ON SPACIOUS PARCELS DIRECTLY ADJACENT TO LONG ESTABLISHED NEIGHBORHOOD.
- CENTRAL PARK - TRADITIONAL SINGLE FAMILY HOMES AND PARCELS AROUND COMMUNITY PARK.
- BISHOP - TRADITIONAL SINGLE FAMILY HOMES AND PARCELS.
- CACTUS - SINGLE FAMILY HOMES AND PARCELS ABUTTING STATE LANDS.
- PARK PLACE - SINGLE FAMILY HOMES AND PARCELS NEAR COMMUNITY PARK.
- BREWER - SEMI-SECLUDED SINGLE FAMILY LIVING WITH TREMENDOUS VIEWS.
- DUNHAM - SINGLE FAMILY HOMES ON SPACIOUS PARCELS WITH TREMENDOUS VIEWS.
- ELDER RIDGE ROAD - THE ULTIMATE LIVING EXPERIENCE. SPACIOUS PARCELS OVERLOOKING THE TOWN OF BAYFIELD AFFORDING AMAZING VIEWS OF THE LA PLATA MTNS, THE PINE RIVER VALLEY, AND MTNS BEYOND. IT JUST DOESN'T GET ANY BETTER THAN THIS!!!



**THIS MAP CONTAINS PLATTED AND CONCEPTUAL ELEMENTS NOT YET PLATTED. LAYOUT OF FUTURE PHASES SUBJECT TO CHANGE W/O NOTICE.**  
REVISED 2008/08/15

**FOR INFO:**

**WWW.DOVERANCH.COM**

**970.749.1616**