



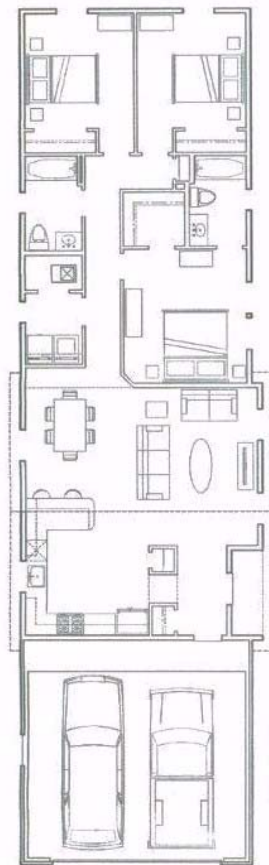
**\$239,900**

**1703 N. Taylor Circle**

**Every Artistic Home Features:**

- LEED Certified
- Energy Star Certified
- HERS Index of 0-57
- Averages 43% more energy efficient than a "code" build home
- Includes Air Conditioning
- Whole house HEPA filtration system.
- Includes Landscaping
- 2 yr system/10 year structural warranty from 2/10 home

**PLAN 1315**



FLOOR PLAN  
1315 SQ FT  
23'-0"W x 82'-0"L



**1315 Sq. Ft.**

**MLS #  
643684**

\*\*\*\*\*  
**Dove Ranch Sales Office**  
**500 Dove Ranch Road**  
**Bayfield, CO 81122**  
**970.884.5102**

**DIRECTIONS TO SALES OFFICE:**

FROM HWY 160 (BAYFIELD) TURN LEFT ON CR 501. GO 1.1 MILES NORTH AND LOOK FOR DOVE RANCH SIGNS TURN RIGHT. LOOK FOR OPEN HOUSE SIGNS.



**1315 Sq. Ft.**

**\$239,900**

*Price above is after the discount*

BUILDING GREEN

Thanks to advanced design, engineering and construction techniques, Artistic Homes has added a home heating and cooling cost guarantee.

Artistic Homes guarantees an air tight construction on all their homes. The heating ducts are located in conditioned space to allow for an un-interrupted blanket of insulation in the attic.

Every home is sized, sealed and insulated and leak tested. With a room to room pressure balanced system, Artistic Homes guarantees no more than 3 degrees temperature difference in living to provide maximum comfort.

**CALL OR STOP  
BY TODAY**

**TO LEARN MORE ABOUT  
THESE HIGH  
PERFORMANCE, AWARD  
WINNING 100% LEED-H  
HOMES**

JUST SOME OF THE MANY DETAILS:

Bedrooms: 3  
Bathrooms: 2  
Heat: Forced Air 95% Eff. Gas Furnace  
Cooling: Refrigerated Air  
Air Quality: Whole House High Efficiency Air Filtration System with Room Pressure Balanced System  
Windows: ANDERSON Energy Star Rated Low E with Argon Gas Blend  
Insulation: GREEN GUARD R50 in Ceiling, R21 in Walls

AVAILABLE OPTIONAL PACKAGES:

Plumbing, Appliances, Lighting, Flooring, Accent Walls, Solar Packages, Exterior stone, Shingles and Stucco Color.

**FOR MORE INFORMATION CONTACT:**

**DOVE RANCH SALES OFFICE**

**970.884.5102**

**sales@doveranch.com**

**www.DOVERANCH.com**