



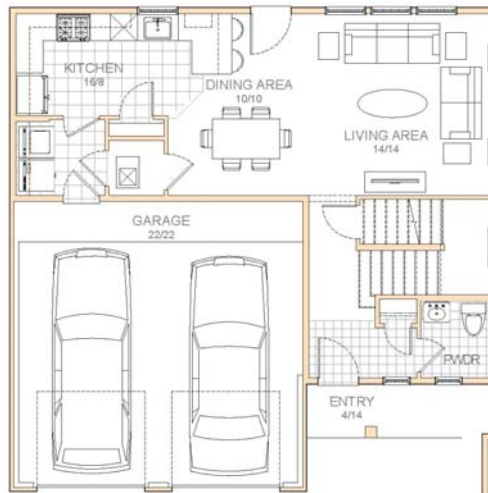
\$259,900

1731 N. Taylor Circle

Every Artistic Home Features:

- LEED Certified
- Energy Star Certified
- HERS Index of 0-57
- Averages 43% more energy efficient than a "code" build home
- Includes Air Conditioning
- Whole house HEPA filtration system.
- Includes Landscaping
- 2 yr system/10 year structural warranty from 2/10 home buy-

PLAN 1717



First Floor

Plan 1717
36'x36'

1717 SQFT

**MLS #
642236**



Second Floor

Plan 1717
36'x36'

Dove Ranch Sales Office
1731 N Taylor Circle
Bayfield, CO 81122
970.884.5102

DIRECTIONS TO SALES OFFICE:

FROM HWY 160 (BAYFIELD) TURN LEFT ON CR 501. GO 1.1 MILES NORTH AND LOOK FOR DOVE RANCH SIGNS TURN RIGHT. MAKE THE FIRST LEFT ON TAYLOR CIRCLE GO .1 MILES TO AUTO COURT. LOOK FOR OPEN HOUSE SIGNS.



1717 Sq. Ft.

\$259,900

Price above is after the discount

BUILDING GREEN

Thanks to advanced design, engineering and construction techniques, Artistic Homes has added a home heating and cooling cost guarantee.

Artistic Homes guarantees an air tight construction on all their homes. The heating ducts are located in conditioned space to allow for an un-interrupted blanket of insulation in the attic.

Every home is sized, sealed and insulated and leak tested. With a room to room pressure balanced system, Artistic Homes guarantees no more than 3 degrees temperature difference in living to provide maximum comfort.

**CALL OR STOP
BY TODAY**

**TO LEARN MORE ABOUT
THESE HIGH
PERFORMANCE, AWARD
WINNING 100% LEED-H
HOMES**

JUST SOME OF THE MANY DETAILS:

Bedrooms: 3
Bathrooms: 2.5
Heat: Forced Air 95% Eff. Gas Furnace
Cooling: Refrigerated Air
Air Quality: Whole House High Efficiency Air Filtration System with Room Pressure Balanced System
Windows: ANDERSON Energy Star Rated Low E with Argon Gas Blend
Insulation: GREEN GUARD R50 in Ceiling, R21 in Walls

AVAILABLE OPTIONAL PACKAGES:

Plumbing, Appliances, Lighting, Flooring, Accent Walls, Solar Packages, Exterior stone, Shingles and Stucco Color.

FOR MORE INFORMATION CONTACT:

DOVE RANCH SALES OFFICE

970.884.5102

OR

GINA MC CORMICK

970.403.6116

www.DOVERANCH.com